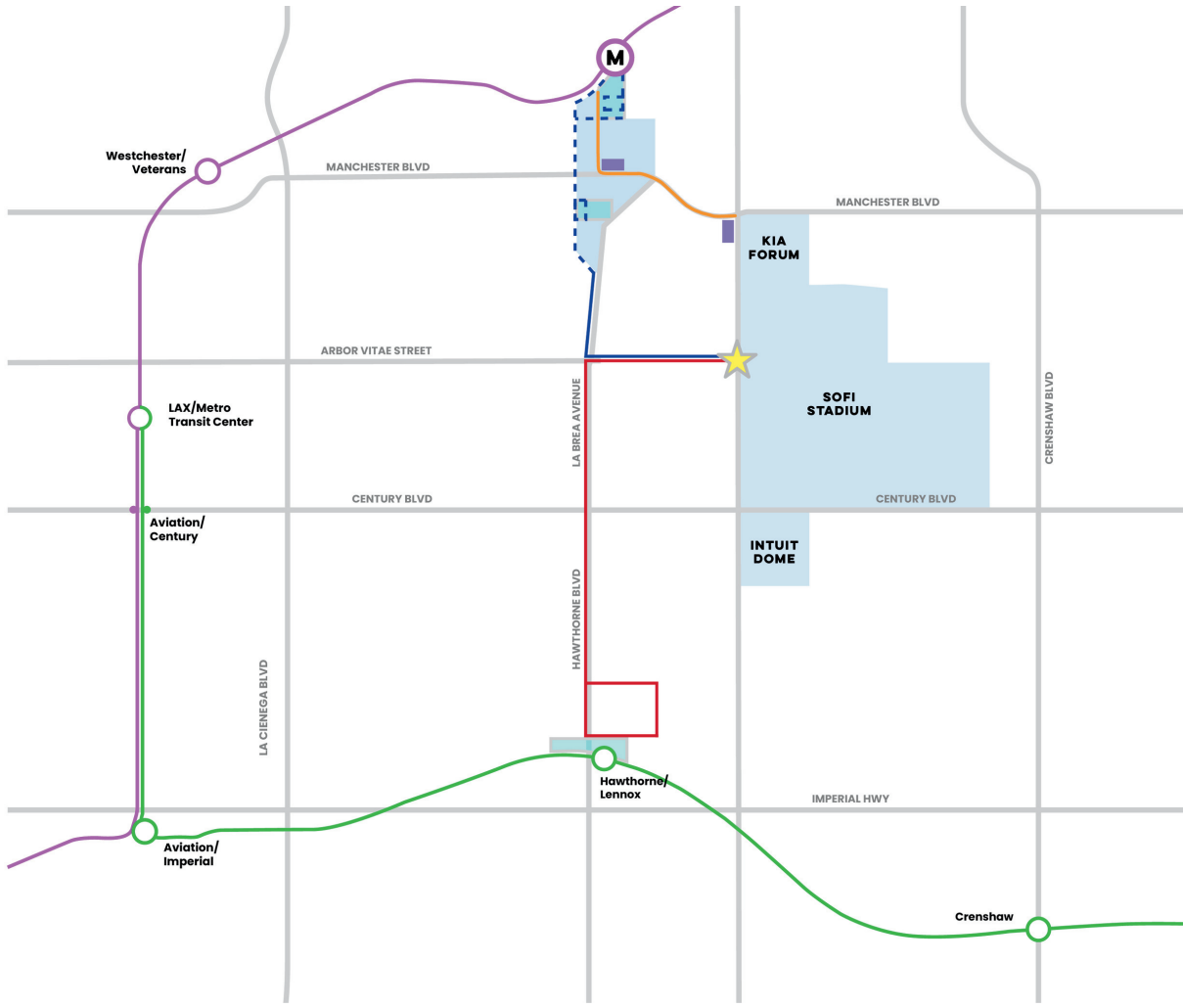
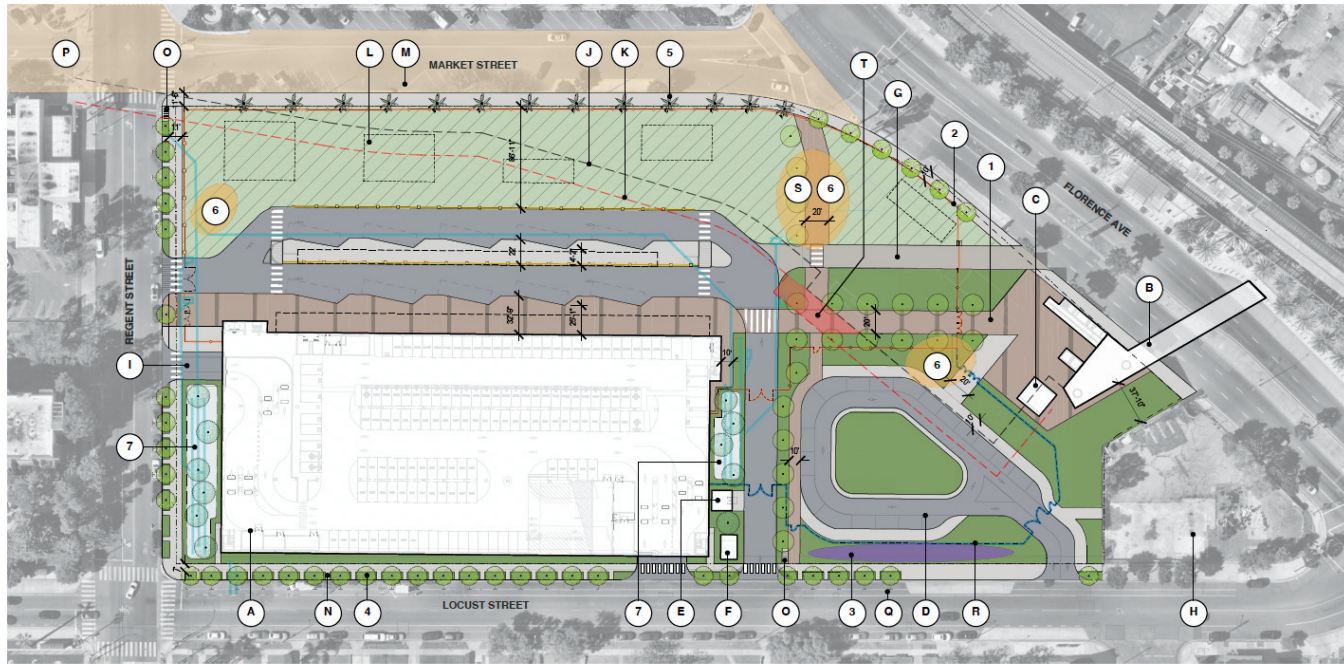


Inglewood: Mobility Hubs

- North Bus Route A (Dedicated Lane)
- Pedestrian Corridor
- - - North Bus Route A (Mixed Traffic)
- ★ Existing Intermodal Transit Facility
- South Bus Route A (Dedicated Lane)
- Metro K Line
- South Bus Route B (Dedicated Lane)
- Downtown Inglewood Station (K Line)
- Metro C Line
- C Line Metro Station
- Districts
- Mobility Hubs
- Transit Improvement Sites



Market/Florence: Mobility Hub

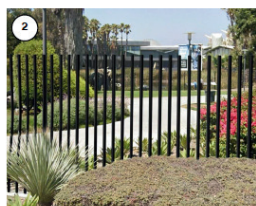


LEGEND

- A. PARKING STRUCTURE
- B. PEDESTRIAN BRIDGE
- C. BIKE ENCLOSURE, INCLUDING BIKE REPAIR
- D. STATION
- E. TNC DROP-OFF / PICK-UP
- F. TRASH ENCLOSURE (BUFFERED WITH PLANTING)
- G. TRANSFORMER ENCLOSURE (BUFFERED WITH PLANTING)
- H. FIRE LANE
- I. NOT IN SCOPE
- J. UTILITIES
- K. APM CONSTRUCTION BOUNDARY
- L. APM 20' FIRE LANE
- M. INTERIM LANDSCAPE AREA, FUTURE RETAIL INCLUDING BUT NOT LIMITED TO MODULAR RETAIL, EVENT SPACES, A PLAYGROUND, OUTDOOR SEATING, FLEXIBLE EVENT/VENDOR SPACES, AND LANDSCAPING. PROGRAM TBD.
- N. STRIPING UPDATES TBD
- O. PLANTING AREA
- P. SHORT TERM BIKE PARKING
- Q. MARKET STREET STREETSCAPE
- R. EXISTING BIKE LANE
- S. ALTERNATIVE PERIMETER FENCE LAYOUT
- T. POTENTIAL PLAYGROUND VERSUS ACTIVATED SPACE FOR EVENTS, PROGRAM TBD
- 1. FUTURE FIRE LANE
- 2. 3. 4. 5. 6. 7.



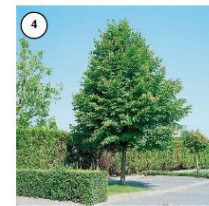
1. Pedestrian Spine.



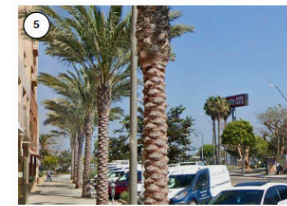
2. Perimeter Fence.



3. Pedicab Staging Area.



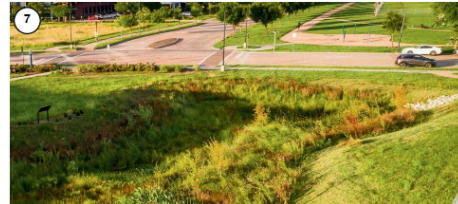
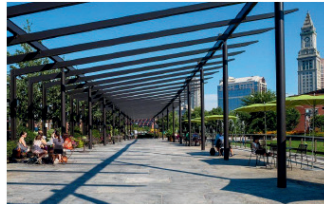
4. Brisbane Box.



5. Transplanted Palms.



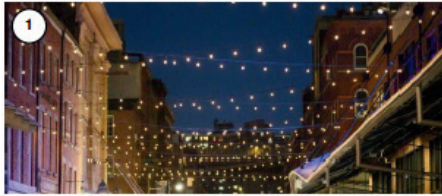
6. Gathering Spaces.



7. Planted Stormwater Basin.



La Brea/Kelso: Streetscape



Festoon Lighting



Planting Area



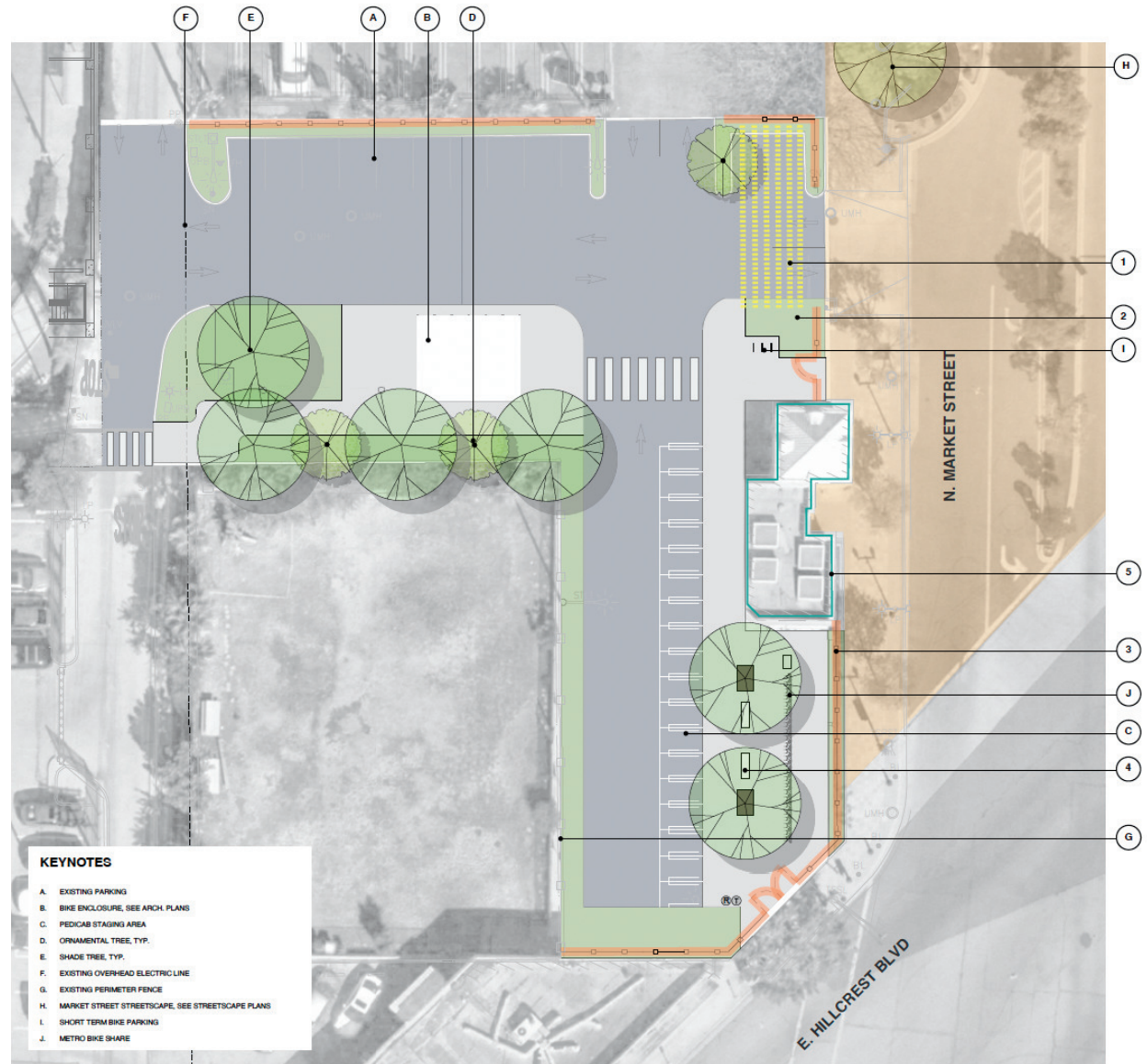
Perimeter Fencing



Site Furnishings



Mural Opportunity.



Market Street: Trees and Planting Areas

MARKET STREET - EXISTING CONDITIONS - ELEVATION



EXISTING FEATURES

- Many trees recommended for removal by arborist
- Sparse planting areas with exposed, non-functioning irrigation equipment
- Planter pots without planting
- Heaved pavers and uneven walking surfaces
- Subsidence of pavers, concrete patching of pavers
- Faded, chipped, and rusted furnishings and street lights

Market Street: Trees and Planting Areas

OPTION 1

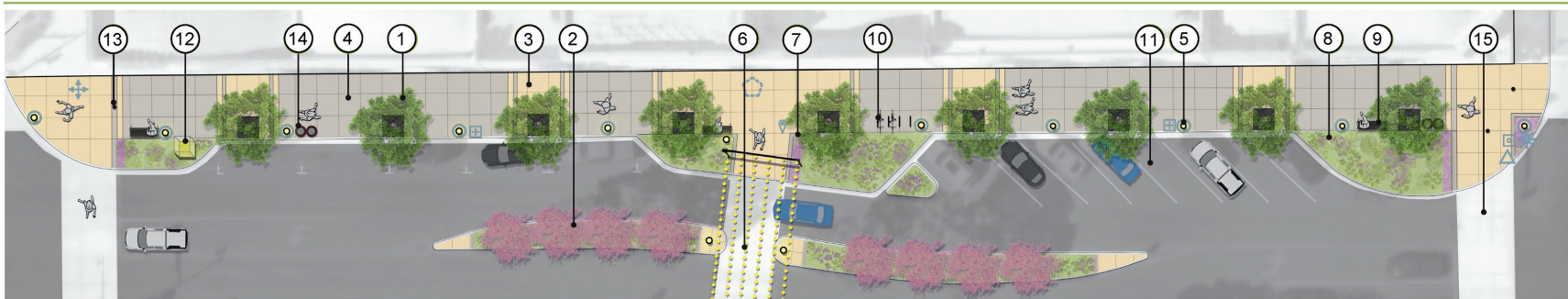
MARKET STREET OPTION 1 - PROPOSED IMPROVEMENTS - PROTOTYPICAL ELEVATION



PROPOSED IMPROVEMENTS

- New 48" box shade trees in larger tree grates
- New annual flowering shrubs
- New pedestrian lights
- New festoon lighting
- New benches, receptacles, bike racks, and bollards
- New, enlarged planting areas with water efficient, low maintenance plants

MARKET STREET OPTION 1 - PROPOSED IMPROVEMENTS - PROTOTYPICAL PLAN



PROPOSED IMPROVEMENTS

- | | |
|---|--|
| 1. 48" box shade tree in new tree grate with black finish | 8. Planting areas with water efficient, low maintenance plants |
| 2. 48" box ornamental tree | 9. Bench with black finish |
| 3. Enhanced sidewalks (colored concrete) | 10. Bike racks with black finish |
| 4. Natural gray sidewalks with enhanced score joints | 11. Asphalt re-surfacing |
| 5. Pedestrian lighting with black finish | 12. Opportunity for future public art |
| 6. Festoon lighting with black posts and beam | 13. Bollards with black finish |
| 7. Annual flowering shrubs | 14. Trash & recycle receptacles with black finish |
| | 15. Existing concrete crosswalk to remain |

WAYFINDING LEGEND

- Wraps and graphics around light posts
- Monuments celebrating local history
- Large placemaking signage
- Small directional sign or digital kiosk
- Parking information
- Stickers and Murals along sidewalks and storefronts
- Street directional signage

NOT TO SCALE



Market Street: Trees and Planting Areas

OPTION 2

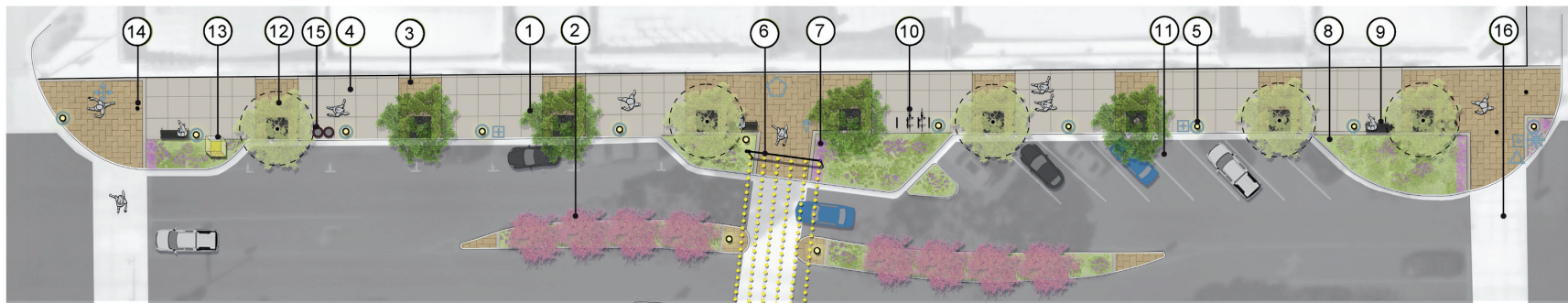
MARKET STREET OPTION 2 - PROPOSED IMPROVEMENTS - PROTOTYPICAL ELEVATION



PROPOSED IMPROVEMENTS

- New 48" box shade trees in larger tree grates
- Retaining 1/3 of the existing trees, if possible
- New annual flowering shrubs
- New pedestrian lights
- New festoon lighting
- New benches, receptacles, bike racks, and bollards
- New, enlarged planting areas with water efficient, low maintenance plants

MARKET STREET OPTION 2 - PROPOSED IMPROVEMENTS - PROTOTYPICAL PLAN



PROPOSED IMPROVEMENTS

- | | |
|--|---|
| 1. 48" box shade tree in new tree grate with black finish | 9. Bench with black finish |
| 2. 48" box ornamental tree | 10. Bike racks with black finish |
| 3. Enhanced sidewalks (pavers) | 11. Asphalt re-surfacing |
| 4. Natural gray sidewalks with enhanced score joints | 12. Existing shade tree to remain in tree grate |
| 5. Pedestrian lighting with black finish | 13. Opportunity for future public art |
| 6. Festoon lighting with black posts and beam | 14. Bollards with black finish |
| 7. Annual flowering shrubs | 15. Trash & recycle receptacles with black finish |
| 8. Planting areas with water efficient, low maintenance plants | 16. Existing concrete crosswalk to remain |

WAYFINDING LEGEND

- Wraps and graphics around light posts
- Monuments celebrating local history
- Large placemaking signage
- Small directional sign or digital kiosk
- Parking information
- Stickers and Murals along sidewalks and storefronts
- Street directional signage

NOT TO SCALE



Market Street: Trees and Planting Areas

OPTION 3

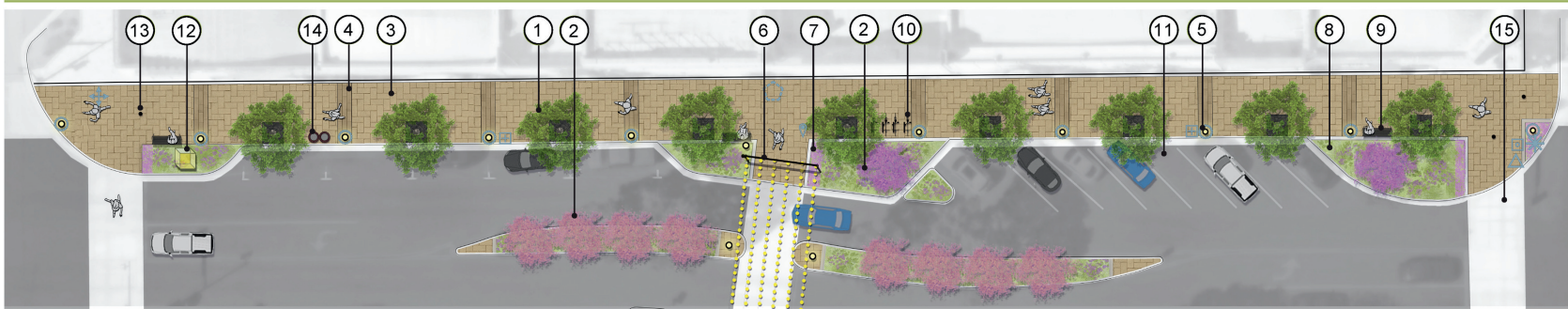
MARKET STREET OPTION 3 - PROPOSED IMPROVEMENTS - PROTOTYPICAL ELEVATION



PROPOSED IMPROVEMENTS

- New 48" box shade trees in larger tree grates
- New annual flowering shrubs
- New pedestrian lights
- New festoon lighting
- New benches, receptacles, bike racks, and bollards
- New, enlarged planting areas with water efficient, low maintenance plans

MARKET STREET OPTION 3 - PROPOSED IMPROVEMENTS - PROTOTYPICAL PLAN



PROPOSED IMPROVEMENTS

- | | |
|--|---|
| 1. 48" box shade tree in new tree grate with black finish | 9. Bench with black finish |
| 2. 48" box ornamental tree | 10. Bike racks with black finish |
| 3. Enhanced sidewalks (pavers) | 11. Asphalt re-surfacing |
| 4. Paver banding | 12. Opportunity for future public art |
| 5. Pedestrian lighting with black finish | 13. Bollards with black finish |
| 6. Festoon lighting with black posts and beam | 14. Trash & recycle receptacles with black finish |
| 7. Annual flowering shrubs | 15. Existing concrete crosswalk to remain |
| 8. Planting areas with water efficient, low maintenance plants | |

WAYFINDING LEGEND

- Wraps and graphics around light posts
- Monuments celebrating local history
- Large placemaking signage
- Small directional sign or digital kiosk
- Parking information
- Stickers and Murals along sidewalks and storefronts
- Street directional signage

NOT TO SCALE



Manchester: Trees and Planting Areas

MANCHESTER BOULEVARD - EXISTING CONDITIONS ELEVATION



EXISTING FEATURES

- Palms of various heights
- Inconsistent, interspersed ornamental trees
- Severely worn, cracked, and uneven sidewalks
- Street lights not at a pedestrian scale

Manchester: Trees and Planting Areas

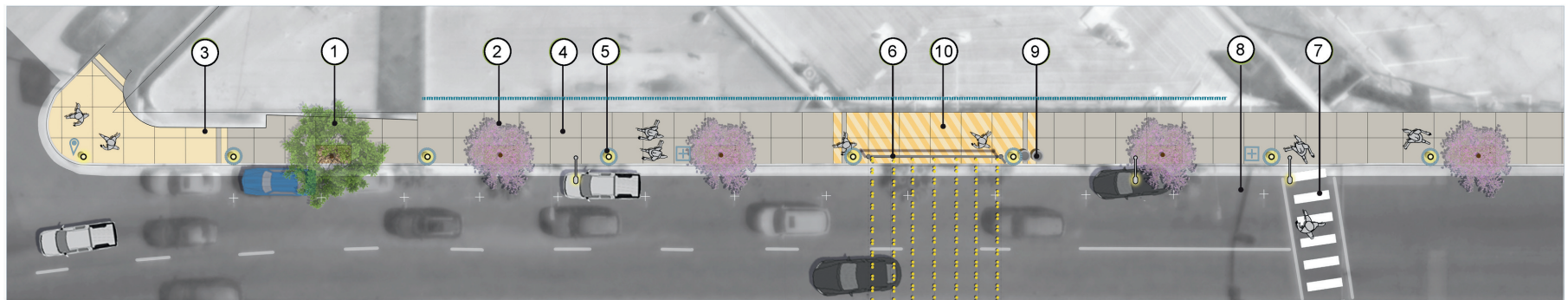
MANCHESTER BOULEVARD - PROPOSED IMPROVEMENTS - PROTOTYPICAL ELEVATION



PROPOSED IMPROVEMENTS

- New 48" box shade trees and ornamental trees in larger tree wells
- New street and pedestrian lights, banners
- New festoon lighting
- New benches and receptacles at bus stops

MANCHESTER BOULEVARD - PROPOSED IMPROVEMENTS - PROTOTYPICAL PLAN



PROPOSED IMPROVEMENTS

1. 48" box shade tree in decomposed granite surface
2. 48" box ornamental tree in decomposed granite surface
3. Enhanced sidewalks (colored concrete)
4. Natural gray sidewalks with enhanced score joints
5. Pedestrian lighting with gray finish
6. Festoon lighting with gray posts and beam
7. Continental striping at crosswalks
8. Asphalt re-surfacing
9. Trash & recycle receptacles with gray finish
10. Graphic sticker on pavement, exact design to be determined

WAYFINDING LEGEND

- Wraps and graphics around light posts
- 📍 Monuments celebrating local history
- ⊕ Parking information
- Wraps and graphics along fence lines

NOT TO SCALE



Market/Queen: Trees and Planting Areas

EXISTING

Market/Queen Streets Trees:

1/3 of trees impacted due to trunk leaning, or tree grates embedded into the trunk. Additionally, roughly 1/3 of the trees are contributing to paver heaving/subsiding in sidewalk areas. Trees are missing in some areas along the right of way.

Market Street Planting Areas:

Spotty surviving shrubs, planting areas with bare soil and exposed irrigation equipment, many planter pots lack planting



Manchester: Trees and Planting Areas

Inconsistent Tree Types:

Majority palms, 4 different tree species of varying size, height, and spacing (medians are currently hardscape)



Market/Queen: Trees and Planting Areas

PROPOSED

New planter pots consolidated to intersection areas, and new planting areas, median planting areas, street trees for shade, and ornamental trees.



Manchester: Trees and Planting Areas

PROPOSED

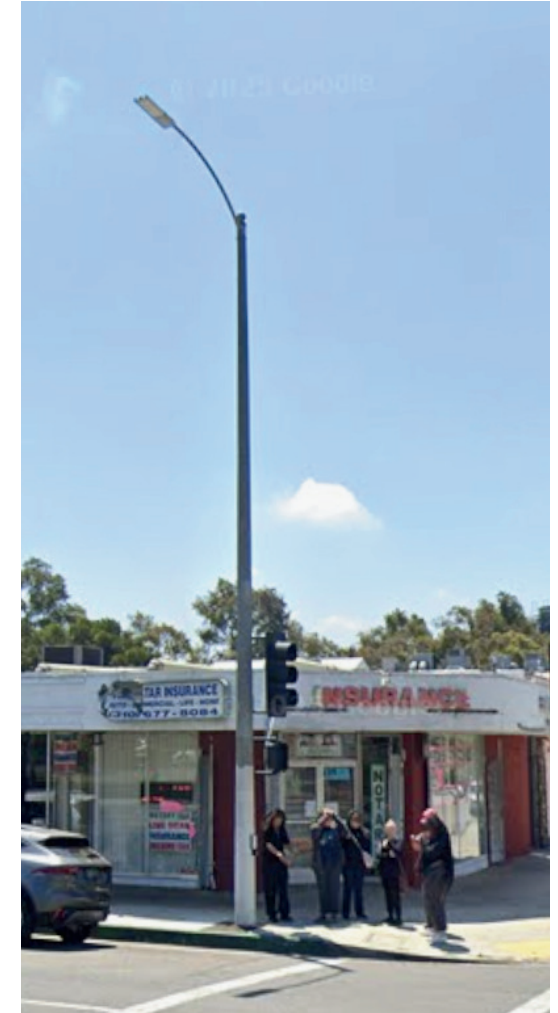
New median planting areas,
street trees, and ornamental trees



Market/Manchester: Street Lighting

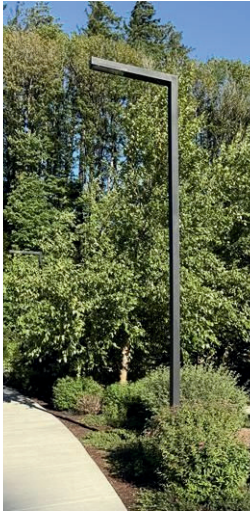
EXISTING

- Existing lighting provides insufficient illumination to encourage walkability for both Market St. and Manchester Ave.
- Bases are rusted; age and maintenance issues, and not as energy inefficient as newer fixtures
- Lacks consistency



Street Lighting and Pedestrian Lighting

PROPOSED



Manchester/Market: Decorative Lighting

EXISTING

▶ **Manchester Boulevard:**
Festoon lighting installed between some street lights, inconsistently applied

▼ **Market Street:**
Festoon lighting installed between buildings and street trees, holiday lighting wrapped around palm/tree trunks, inconsistently applied



Manchester/Market: Decorative Lighting

PROPOSED

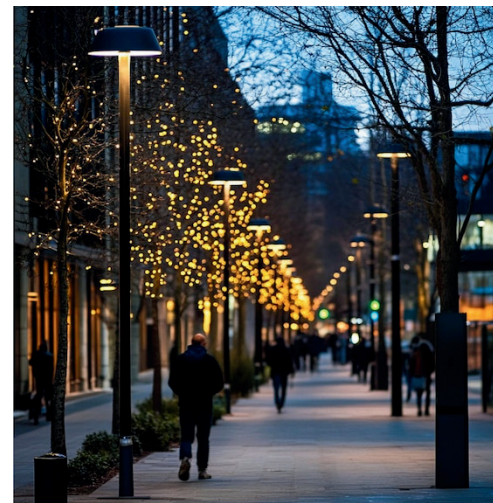
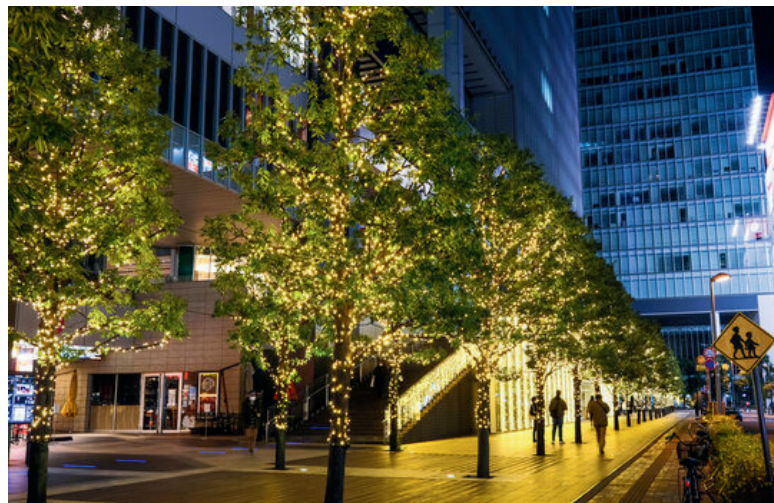
▼ Festoon Lighting:

Linear, zig-zag, and crisscross design options
(Market Street & Manchester Boulevard)



◀ LED Lighting:

LED lighting provides a new experience at
night, with colors and patterns changed
seasonally (Market Street)



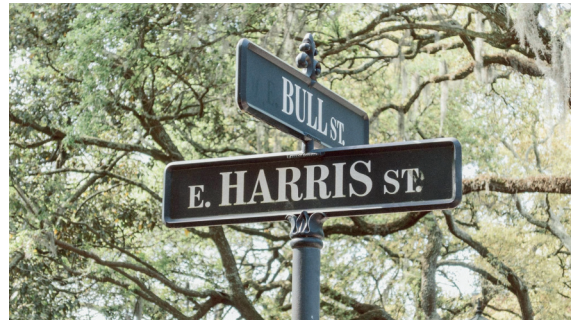
What do you prefer?

Wayfinding Signage: Color Palettes

TRADITIONAL/MUTED | (Earth tones, navy, bronze, greens, creams)

Traditional and muted color palettes convey stability, heritage, and civic permanence. These systems often blend comfortably into historic or small-scale urban environments and age gracefully over time. Neutral tones reduce visual clutter and create a calm streetscape presence, making them suitable for civic districts or preservation areas.

- Timeless and politically safe
- Ages well with minimal visual fatigue
- Complements brick, concrete, and historic storefronts
- Low maintenance appearance



Wayfinding Signage: Color Palettes

CONTEMPORARY CIVIC | (Deep neutrals + strategic accent colors)

Contemporary civic palettes balance clarity and identity by pairing neutral base colors with selective accent tones. This approach creates a modern, cohesive system that feels current without overpowering the surrounding environment. It supports legibility, scalability, and long-term adaptability across different streets and program types.

- Clean and highly legible
- Flexible across multiple districts
- Professional civic identity
- Works well with modern infrastructure and



Wayfinding Signage: Color Palettes

VIBRANT & CELEBRATORY | (Bright blues, oranges, magentas, yellows, bold contrasts)

Vibrant palettes emphasize energy, culture, and celebration, transforming signage into placemaking elements rather than purely functional objects. Bold colors improve visibility and create memorable experiences, particularly in districts defined by entertainment, arts, or cultural activity.

- Highly visible for pedestrians and drivers
- Reinforces identity and destination branding
- Encourages social interaction and photo moments
- Supports storytelling and cultural expression



Design Approach: Generic Wayfinding

Generic wayfinding systems prioritize consistency, compliance, and cost efficiency. Typically composed of standardized panels, poles, and highway-derived typography, these systems focus primarily on directional clarity rather than placemaking or identity.

- Highly legible and familiar to users
- Cost-effective and easy to implement
- Simple maintenance and replacement
- Meets regulatory expectations

When It Works:

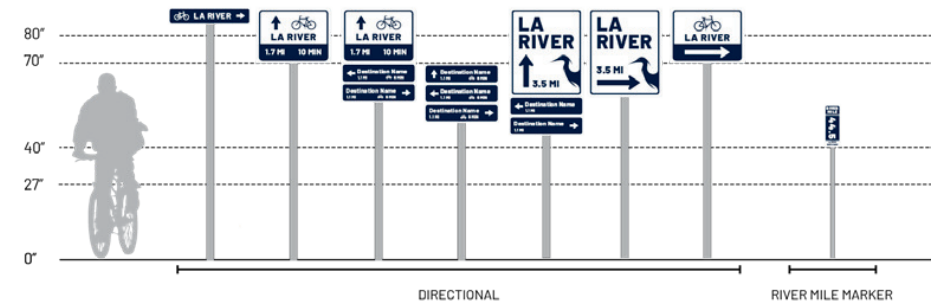
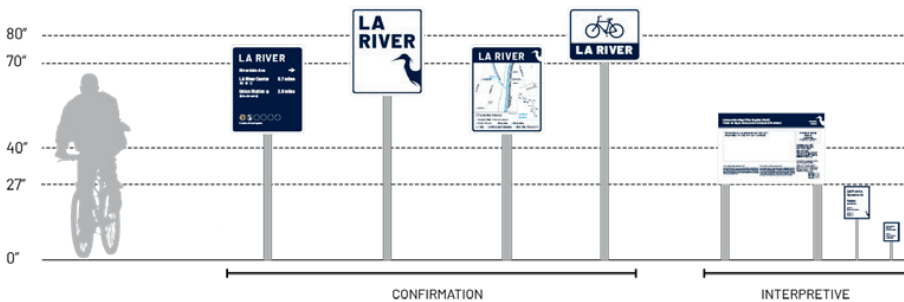
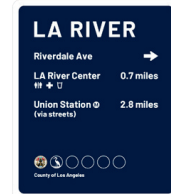
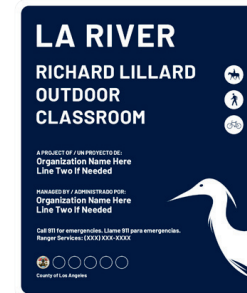
- Transitional districts
- Limited budgets
- Functional corridors with minimal pedestrian activity

Function-first, standardized navigation

CASE STUDY: LA RIVER



LA RIVER MASTER PLAN



Design Approach: Contemporary Signage

Clear, Cohesive Modern Civic identity

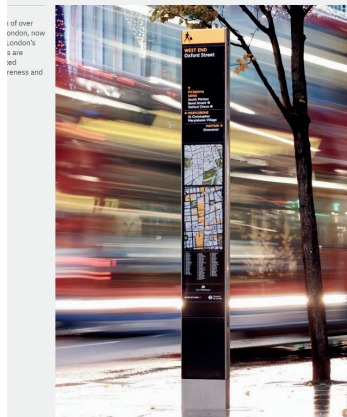
Contemporary signage integrates clean typography, restrained color palettes, and architectural forms to create cohesive systems across varied urban environments. The emphasis is on clarity, scalability, and long-term adaptability.

- Highly legible for both pedestrians and vehicles
- Flexible across districts and infrastructure types
- Timeless aesthetic with long lifespan
- Integrates well with modern streetscapes

When It Works:

- Multimodal corridors
- Downtown frameworks
- Mobility hubs and civic districts

CASE STUDY: LEGIBLE LONDON



Design Approach:

Uniquely Designed / Branded Wayfinding

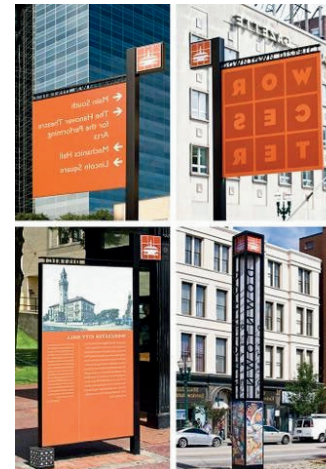
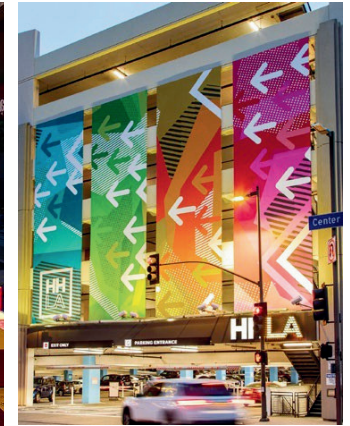
Wayfinding as placemaking and storytelling

Branded wayfinding systems treat signage as an extension of identity and culture. Forms, materials, and graphics are customized to reflect local history, creativity, or civic narrative, turning navigation into an experiential layer of the public realm.

- Strong place identity and memorability
- Supports storytelling and cultural expression
- Creates landmarks and photo moments
- Enhances visitor experience

When It Works:

- Cultural districts
- Entertainment corridors
- Destination downtowns
- Tourism-oriented areas



Sidewalks

EXISTING

Market/Queen Streets: ►

Heaved pavers due to tree roots, subsidence of pavers in some areas, concrete patches where pavers are missing

▼ Manchester Boulevard:

Cracked concrete, asphalt patching of sidewalks, patched median paving, heaved concrete that has been ground down, aged concrete

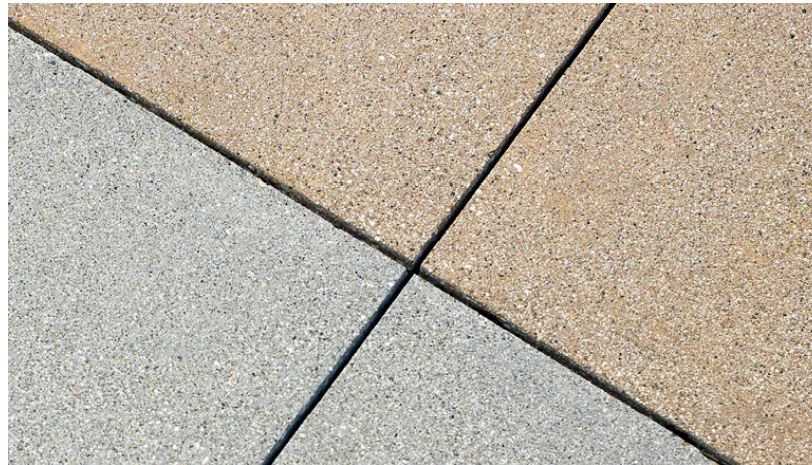
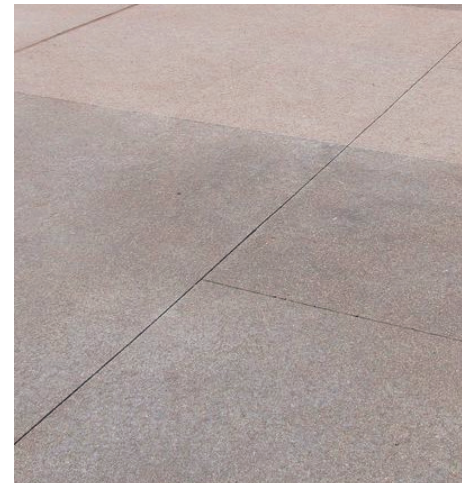


Sidewalks

PROPOSED

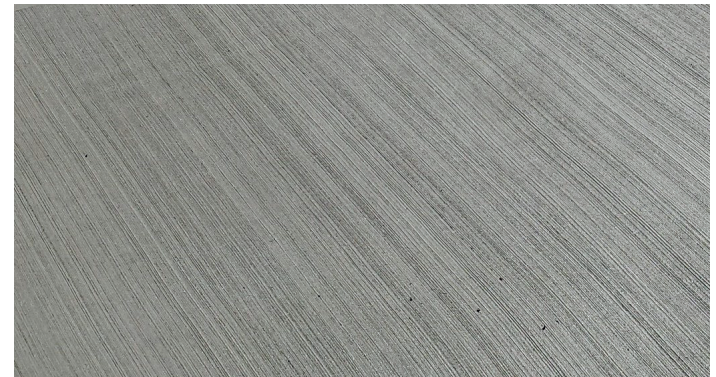
Market/Queen Streets:

New colored concrete pavers installed in varying patterns for an enhanced aesthetic or areas of enhanced concrete with surface retarder finish



Manchester Boulevard:

New enhanced concrete with surface retarder finish, areas of new concrete with broom finish



Street Furniture

EXISTING

Market Streets:

Many of the benches, bollards, receptacles, and fencing have rust and/or chipped paint, and some of the planter pots are also chipped and/or discolored

Manchester Boulevard:

Benches and receptacles at bus stops have varying styles, colors, and materials



Street Furniture

PROPOSED

Market Street:

Provide new furnishings that are black in color to honor the historic Market aesthetic, with forms that are less ornamented than the existing furnishings

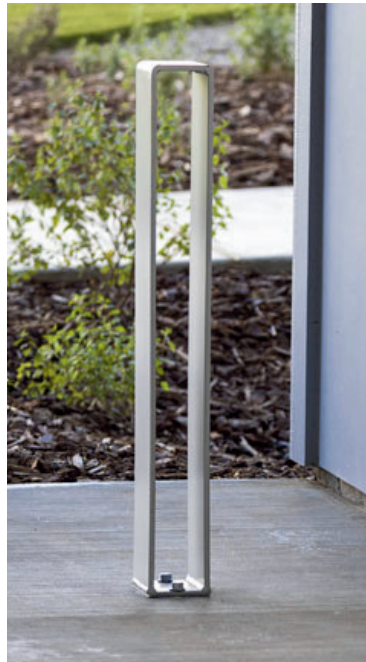
Manchester Boulevard:

Benches and receptacles at bus stops will be replaced with new furnishings





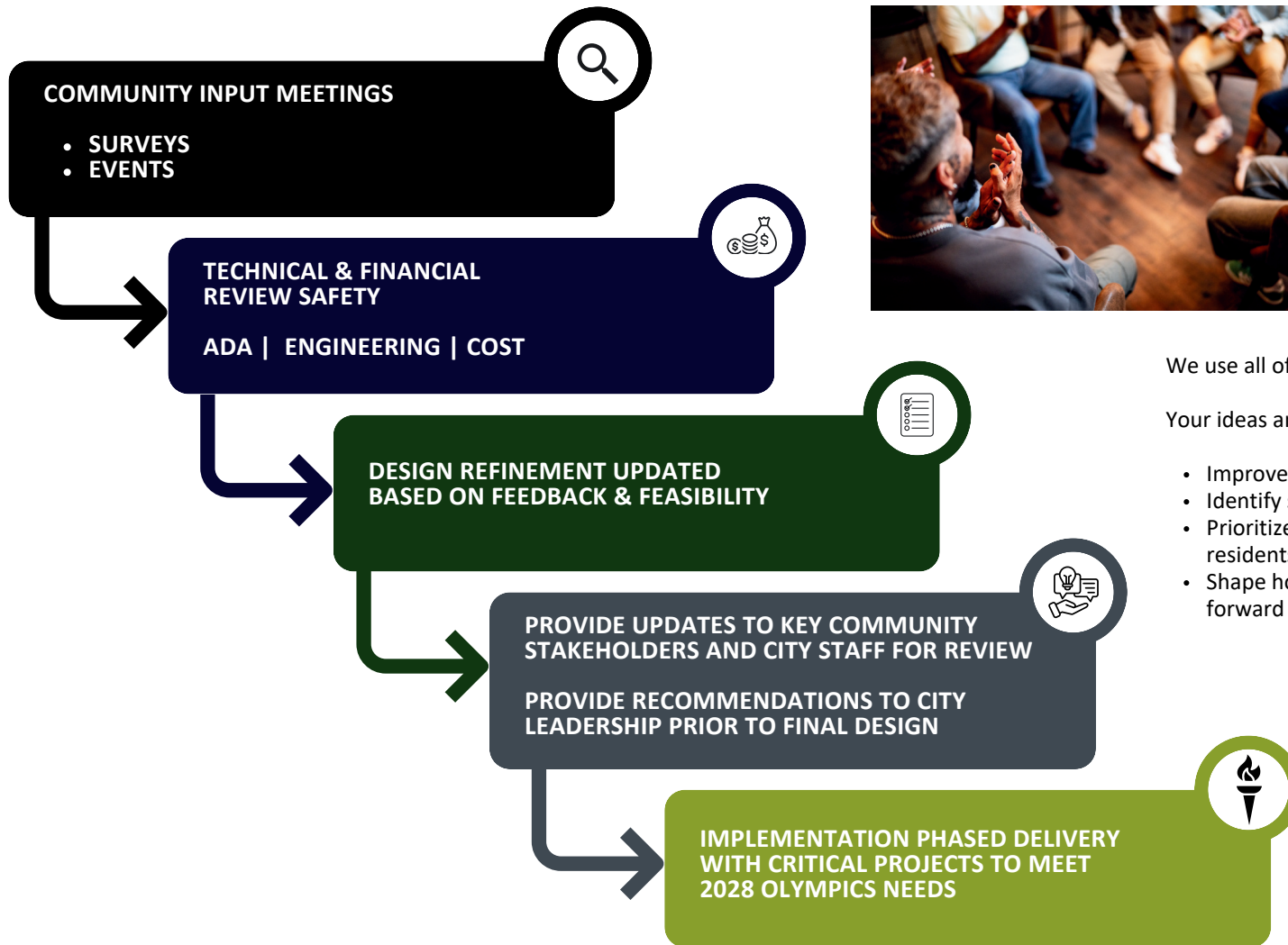
What do you prefer?



What do you prefer?

COMMUNITY-DRIVEN. DATA-INFORMED. COUNCIL-APPROVED.

Thank you for your feedback!



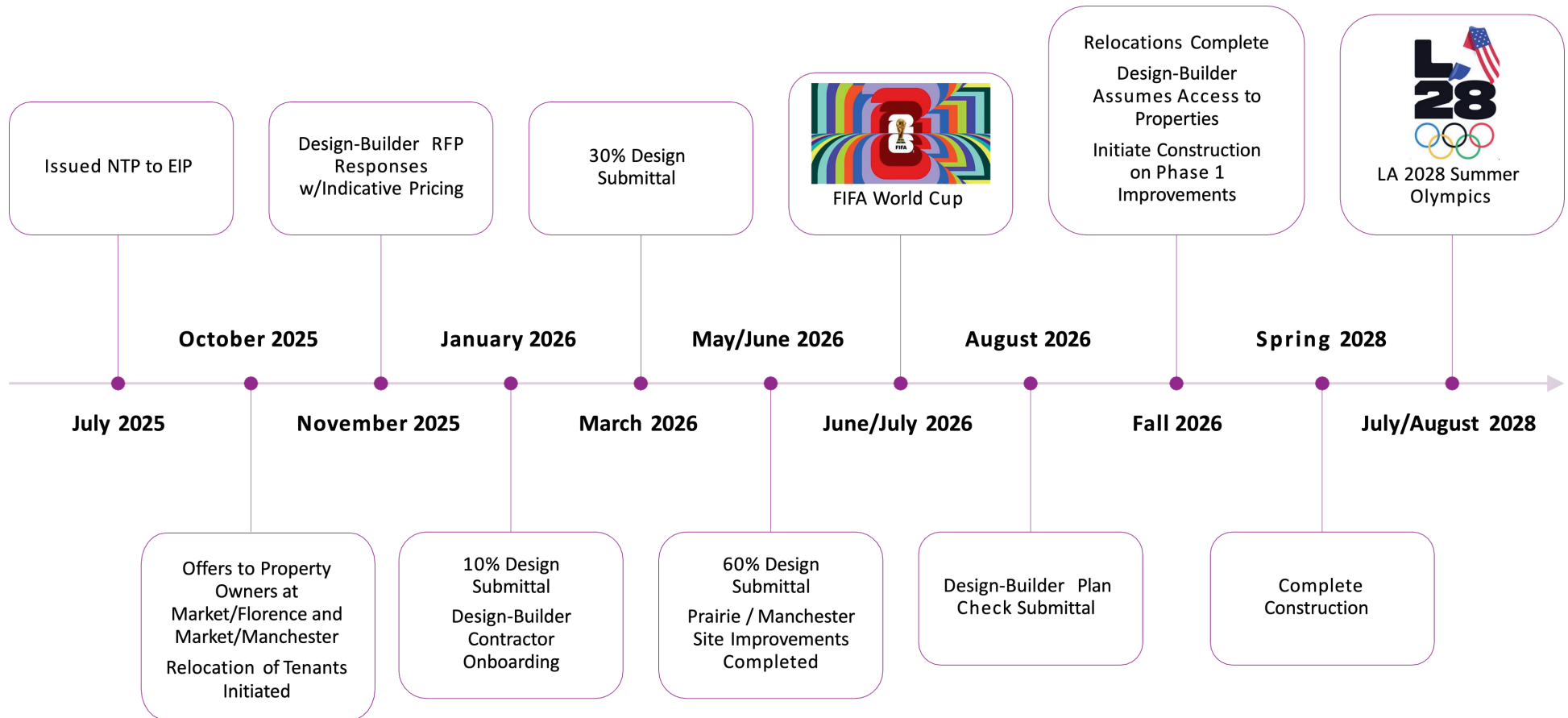
We use all of your input.

Your ideas and concerns will help:

- Improve proposed designs
- Identify safety and accessibility needs
- Prioritize what matters most to residents and businesses
- Shape how improvements move forward

All ideas are evaluated for safety, feasibility, cost, and long-term community benefit before moving forward.

Inglewood Transit Connector Program: Implementation



Inglewood Transit Connector Program: Construction Communications & Business Support

How We Will Keep You Informed Through Out the Process:

- Weekly construction updates, time, duration of construction activities, as temporary sidewalk repairs, street and parking restrictions
- Project website with current schedules and maps
- Email alerts and e-newsletters
- Social media updates
- Direct coordination with adjacent businesses
- Phone hotline and project email

We Will Provide Ongoing Support to Local Businesses:

- Maintain access
- Promote corridor businesses on social media and other media channels
- Inform community of access changes and highlight businesses open during construction
- Provide a business assistance fund

Ways to Stay Connected:

- Sign up for project updates
- Follow the project on social media
- Attend community meetings and outreach events
- Contact the project team with questions or concerns





GLOBAL GAMES | ONE COMMUNITY

THE WOODD CUP



SAVE THE DATE
FRIDAY
JUNE 12 2026

2:00 PM - 6:00 PM
BLOCK PARTY ON
MARKET STREET

USA vs Paraguay
Opening Match Day



SPORTS



FOOD



ENTERTAINMENT



COMMUNITY



Destination Market Street

Program Overview

To support Market Street as a premier location for residents and visitors to eat, shop, and play, the City is investing in façade and tenant improvements for both existing and new businesses.

The City has received grant funds from the California Department of Transportation (Caltrans) to support this initiative.

Funds may be used to repair and repaint building façades, replace doors and windows, update signage, address ADA compliance, and facilitate other interior improvements.

Façade and tenant improvements are anticipated to start in Spring 2026, with some projects expected to be completed later this year. Close coordination is expected between Destination Market Street Projects and Streetscape Improvements to ensure all work is coordinated.



To learn more, scan the QR code or visit pcrcorp.org/inglewood

